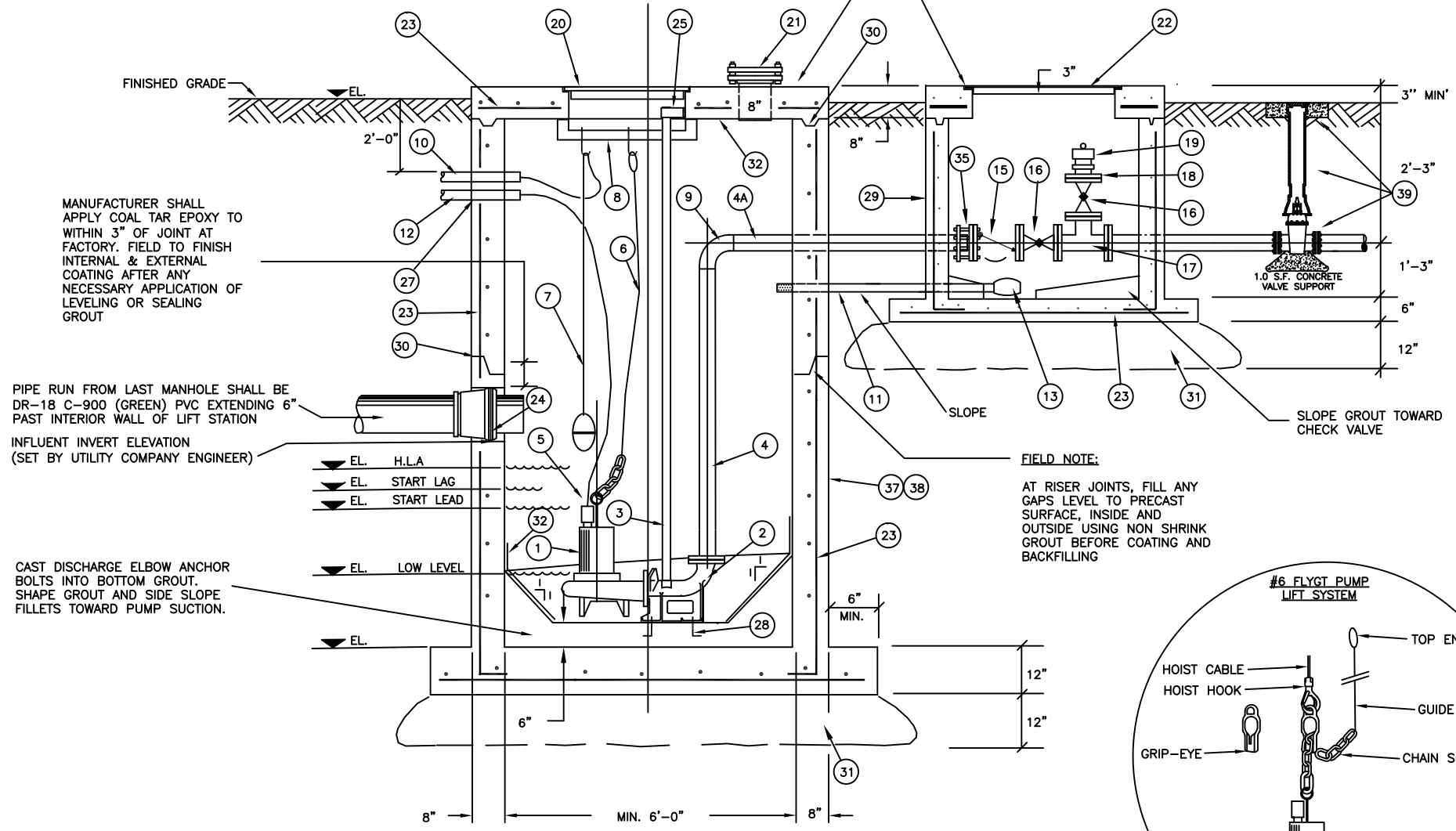


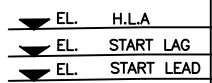
NOTE:  
LIFT STATION AND VALVE  
VAULT TOPS SHALL BE  
AT THE SAME ELEVATION



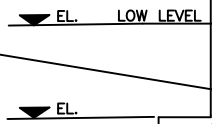
MANUFACTURER SHALL  
APPLY COAL TAR EPOXY TO  
WITHIN 3" OF JOINT AT  
FACTORY. FIELD TO FINISH  
INTERNAL & EXTERNAL  
COATING AFTER ANY  
NECESSARY APPLICATION OF  
LEVELING OR SEALING  
GROUT

PIPE RUN FROM LAST MANHOLE SHALL BE  
DR-18 C-900 (GREEN) PVC EXTENDING 6"  
PAST INTERIOR WALL OF LIFT STATION

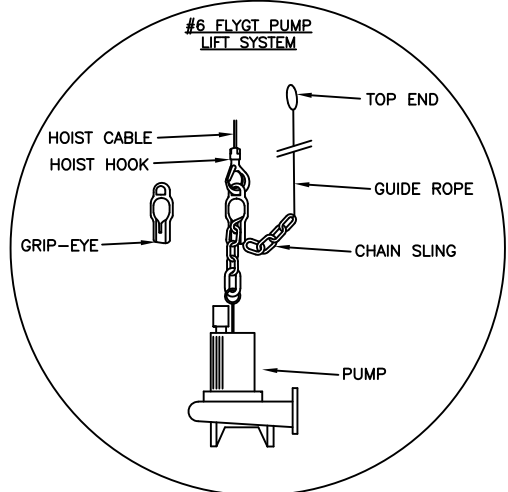
INFLUENT INVERT ELEVATION  
(SET BY UTILITY COMPANY ENGINEER)



CAST DISCHARGE ELBOW ANCHOR  
BOLTS INTO BOTTOM GROUT.  
SHAPE GROUT AND SIDE SLOPE  
FILLET'S TOWARD PUMP SUCTION.

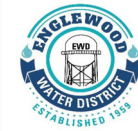


FIELD NOTE:  
AT RISER JOINTS, FILL ANY  
GAPS LEVEL TO PRECAST  
SURFACE, INSIDE AND  
OUTSIDE USING NON SHRINK  
GROUT BEFORE COATING AND  
BACKFILLING

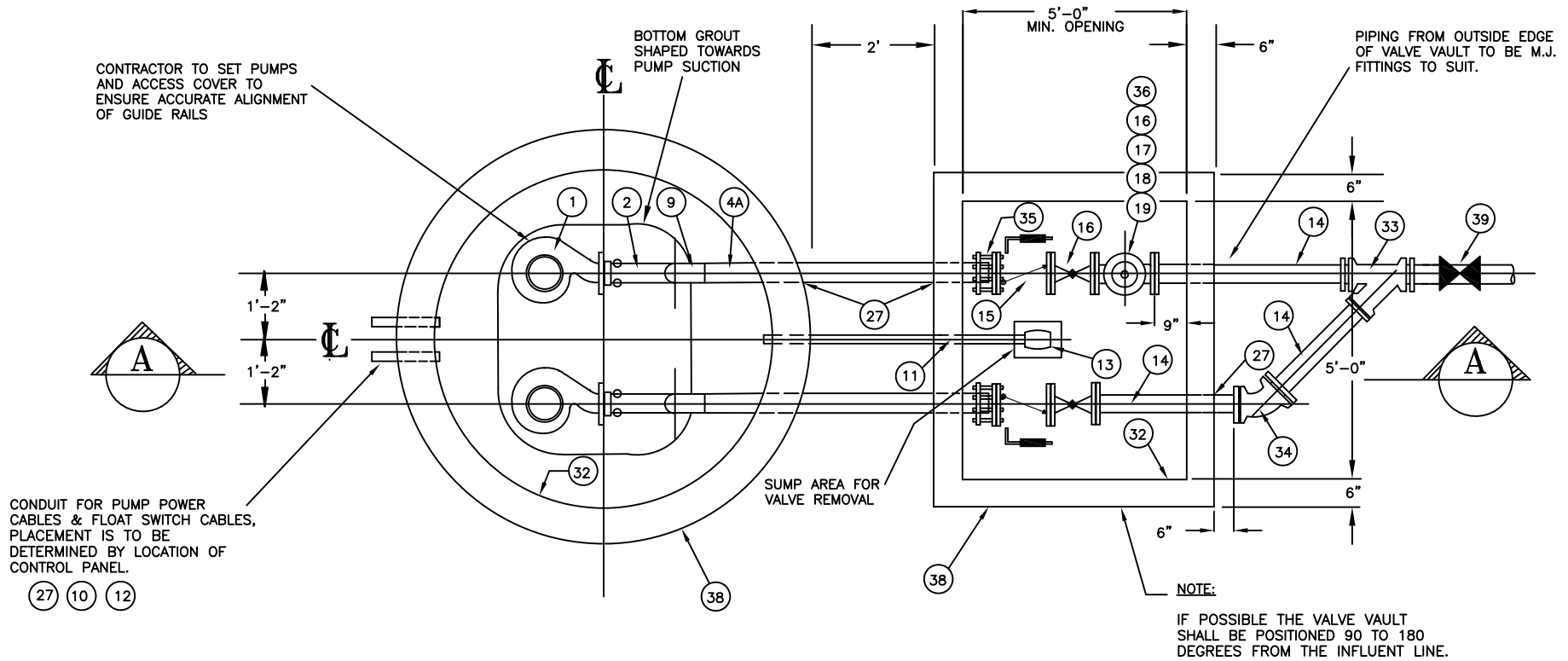


LAST REVISION	JUNE 2022
CHECKED	MM
APPROVED	KRL

**SECTION A-A, THRU WET WELL  
AND VALVE VAULT**

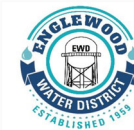


**ENGLEWOOD WATER DISTRICT**  
201 SELMA AVENUE  
ENGLEWOOD, FLORIDA 34223

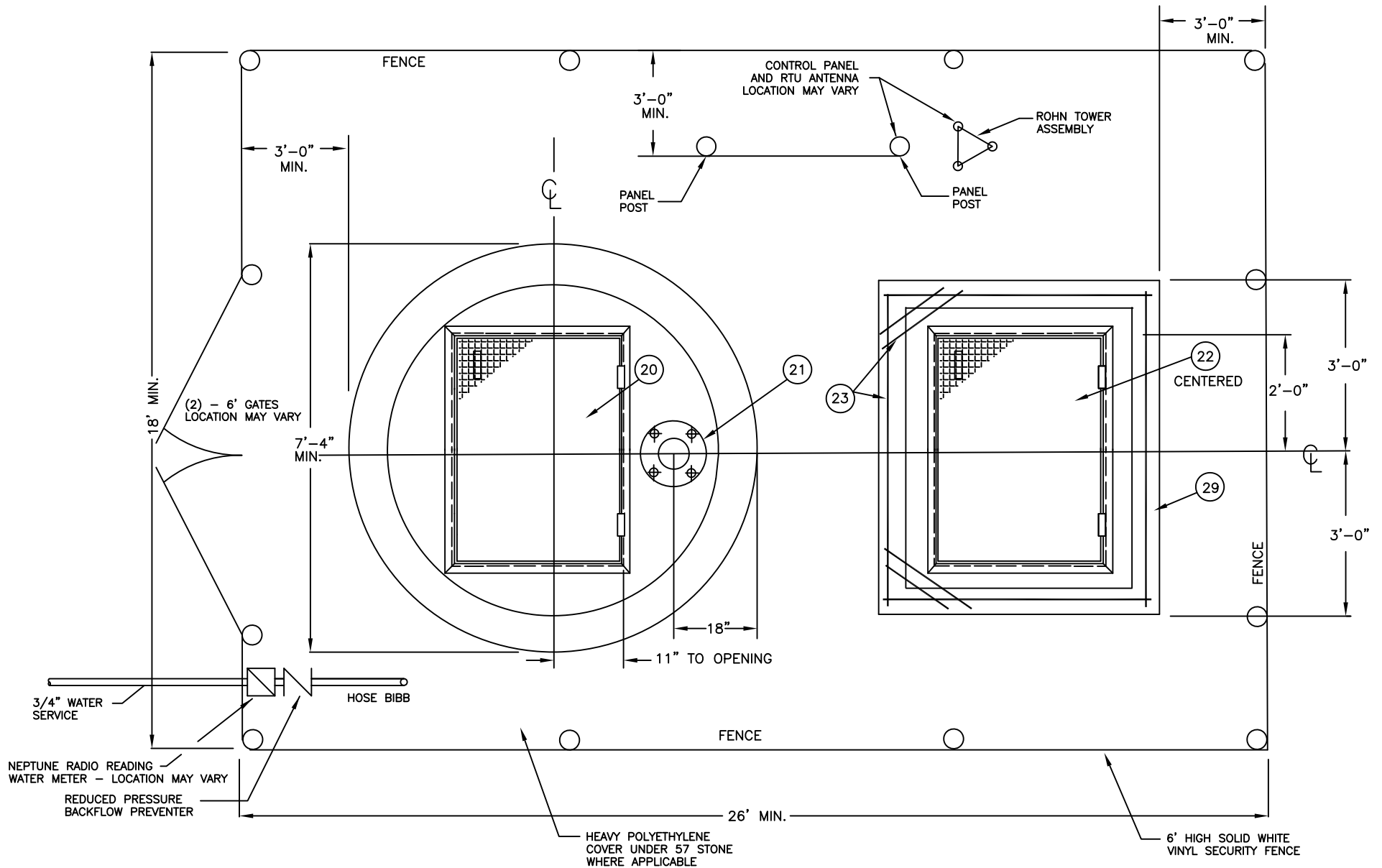


LAST REVISION	JUNE 2022
CHECKED	MM
APPROVED	KRL

**PLAN-WET WELL AND  
VALVE VAULT**

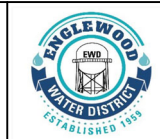


**ENGLEWOOD WATER DISTRICT**  
**201 SELMA AVENUE**  
**ENGLEWOOD, FLORIDA 34223**



LAST REVISION	JUNE 2022
CHECKED	MM
APPROVED	KRL

**PLAN-TOP OF WET WELL  
AND VALVE VAULT**



**ENGLEWOOD WATER DISTRICT**  
201 SELMA AVENUE  
ENGLEWOOD, FLORIDA 34223

**NOTES**

ALL NUTS, BOLTS, WASHERS, SET SCREWS AND OTHER FASTENERS INSIDE WET WELL AND VALVE VAULT SHALL BE TYPE 316 SS STAINLESS STEEL.

**EXTERIOR - WET WELL & VALVE VAULT WALLS**

- A. PATCH LEAKS, CRACKS AND JOINTS WITH HYDRAULIC CEMENT, PRECO PLUG OR EQUIVALENT.
- B. ON ALL BELOW GROUND OUTSIDE CONCRETE SURFACES:- THREE COATS (BLACK/RED/BLACK) COAL TAR EPOXY COATING WITH A MINIMUM DRY FILM THICKNESS OF 10 MILS PER COAT, FOR A TOTAL FINISH THICKNESS OF 30 MILS DRY FILM THICKNESS. COATINGS SHALL BE KOPPERS BITUMASTIC NO. 300M OR APPROVED EQUAL. SUBSEQUENT COATS SHALL BE APPLIED WITHIN 48HRS OF PREVIOUS COAT.
- C. SURFACES SHALL BE CLEAN AND DRY PRIOR TO COATING AND COATING SHALL BE APPLIED IN ACCORDANCE WITH MANUFACTURERS INSTRUCTIONS.

**INTERIOR COATINGS OF PIPES, FITTINGS, VALVES, WET WELL AND VALVE VAULT**

- A. PATCH LEAKS, CRACKS AND JOINTS WITH HYDRAULIC CEMENT, PRECO PLUG OR EQUIVALENT.
- B. COAT D.I. PIPING, FITTINGS, VALVES AND INTERIOR STRUCTURE WITH GREEN MONSTER LINER OR APPROVED EQUAL. SUBSEQUENT COATS SHALL BE APPLIED PER MANUFACTURERS INSTRUCTIONS.
- C. SURFACES SHALL BE DRY AND FREE OF OIL, RUST, SCALE AND DUST PRIOR TO COATING. COATING SHALL ALSO BE APPLIED IN ACCORDANCE WITH MANUFACTURERS INSTRUCTIONS AND COMPANY SPECIFICATIONS.

**DRAWING LEGEND**

- 1. FLYGT SUBMERSIBLE PUMP - TYPE \_\_\_\_, MODEL NO. \_\_\_\_\_, IMPELLER NO. \_\_\_\_\_, \_\_\_\_ H.P., 3 PH WITH POWER CABLES (2 REQUIRED).
- 2. FLYGT COMPATIBLE 4" STANDARD DISCHARGE CONNECTION (2 REQ'D)
- 2A. IF GRINDER PUMP REQUIRED IT SHALL BE 2" DISCHARGE.
- 3. 2" DIAMETER SCH 40 WELDED STAINLESS STEEL PIPE TYPE 316SS MUST BE WITHIN 1/4" TOLERANCE OF FITTING INTO GUIDE RAIL BRACKETS, 4 REQUIRED AT \_\_\_\_ FOOT EACH.
- 3A. 3/4" STAINLESS STEEL GUIDE RAILS AND BRACKETS.
- 4. \_\_\_\_" HDPE DIPS DR11 PIPE WITH FUSED FLANGE ADAPTER AND STAINLESS STEEL BACK-UP RING. \*
- 4A. \_\_\_\_" HDPE DIPS DR11 PIPE.
- 5. PUMP POWER CABLE (FURNISHED BY MANUFACTURER) SHALL BE CONTINUOUS (NO SPLICES) FROM PUMP TO JUNCTION BOX AT PANEL. 2 REQUIRED AT \_\_\_\_ FEET EACH.
- 6. FLYGT PUMP LIFT SYSTEM - TO INCLUDE CHAIN SLING ASSEMBLY. GRIP-EYE AND GUIDE ROPE.
- 7. ROTO FLOAT TYPE S LIQUID LEVEL SENSOR, EACH SENSOR CABLE TO BE A MINIMUM OF \_\_\_\_ CONTINUOUS FEET IN LENGTH - 1 REQUIRED.
- 8. LIQUID LEVEL SENSOR CABLE HOLDER TYPE 316SS WITH PUMP LIFTING CABLE RING. FURNISH WITH NOT LESS THAN 6 PRONGS.
- 9. \_\_\_\_" HDPE DIPS DR11 90 DEGREE ELBOW FUSED. \*
- 10. 2 1/2" MIN SCH 80 PVC CONDUIT FOR PUMP POWER CABLES.
- 11. 2" PVC SCHD 40.
- 12. 2 1/2" MIN SCH 80 PVC CONDUIT FOR FLOAT SWITCH CABLES.
- 13. 2" PVC CHECK VALVE.
- 14. \_\_\_\_" PVC DR-18 C-900 PIPING TO SUIT.
- 15. \_\_\_\_" EMPIRE FUSION BOND EPOXY LINED "QUIET CLOSING SWING CHECK" WITH WEIGHT AND LEVER. \*
- 16. \_\_\_\_" FLANGED DRESSER X-CENTRIC STYLE 820 PLUG VALVE W/HANDLEVER ACTUATOR OR MUELLER A-2602-6-OL-E 193 WITH HANDLEVER. \*
- 17. \_\_\_\_" FLANGED TEE, DI CLASS 51 WITH 316 SS HARDWARE. \*
- 18. \_\_\_\_" DI THREADED FLANGE. \*
- 19. \_\_\_\_" ALUM. KAMLOK COUPLER WITH CAP AND CHAIN. \*
- 20. HALLIDAY A3648 ALUMINUM ACCESS COVER & FRAME OR APPROVED EQUAL.

- 21. STATION VENT.- COMPRISED OF 8" SCH 80 PVC RISER AND FLANGE, 8" PVC BLANK FLANGE, AND 316 SS BOLTS, WASHERS AND NUTS ( USE 2 NUTS PER BOLT, - ONE AS A SPACER - SEE DRAWING, 4 BOLTS REQUIRED). HEAVY FIBERGLASS SCREENING SHALL ALSO BE INSTALLED UNDER CENTER NUTS.
- 22. HALLIDAY A4848 ALUMINUM ACCESS COVER & FRAME OR APPROVED EQUAL.
- 23. #5 REBAR @ 6" O.C EACH WAY.
- 24. NEOPRENE BOOT CONFORMING TO ASTM C 923.
- 25. UPPER GUIDE RAIL BRACKETS ( 2 REQ'D ) TYPE 316 SS.
- 26. FOR GUIDE RAILS OVER 15FT INSTALL INTERMEDIATE GUIDE RAIL BRACKETS 2 REQ'D TYPE 316 SS.
- 27. SEAL AROUND ALL PIPES ON BOTH SIDES OF WALL W/NON-SHRINK GROUT.
- 28. 3/4 X 8 316 SS J BOLTS THREADED MIN. 4" C/W 2 NUTS EACH (8REQ'D)
- 29. VALVE VAULT - PRECAST CONCRETE 4000 PSI STRUCTURE WITH INTEGRALLY CAST CONCRETE BASE SLAB. REINFORCEMENT OF BASE SLAB. SHALL BE WELDED OR CONTINUOUS WITH WALL REINFORCEMENT, WALL WIDTH: 6" FOR VALVE VAULT. AS AN ALTERNATIVE LAY 8" CONCRETE BLOCK WALL ON SLAB, INSERT #5 REBAR (2 PER FT.) & FILL WITH CONCRETE.
- 30. FILL JOINT WITH RAMNEK AFTER APPLYING ONE COAT OF RAMNEK PRIMER PAINT TO BOTH SURFACES (EACH STRUCTURAL SECTION), THEN FILL ANY GAPS LEVEL WITH NON-SHRINK GROUT PRIOR TO FIELD COATING AND BACKFILLING.
- 31. CRUSHED STONE BEDDING MATERIAL IN ACCORDANCE WITH ASTM C-33 GRADATION #67 (3/4" INCH TO #4 SIEVE).
- 32. EWD APPROVED LINER.
- 33. \_\_\_\_" MJ WYE, USE WITH MJ RETAINER GLAND, COLUMBUS STANDARD OR EQUAL. \*
- 34. \_\_\_\_" 45 DEGREES MJ BEND, USE WITH MJ RETAINER GLAND (COLUMBUS STANDARD OR EQUAL). \*
- 35. \_\_\_\_" ROCKWELL #912 CAST IRON FLANGED COUPLING ADAPTER W/SS HARDWARE. \*
- 36. ALL GASKETS SHALL BE 1/8" THICK SBR AS MANUFACTURED BY: U.S. PIPE "FLANGE-TYPE" OR AMERICAN CAST IRON PIPE "TORUSEAL".
- 37. WET WELL - PRECAST CONCRETE 4000 PSI STRUCTURE WITH INTEGRALLY CAST CONCRETE BASE SLAB. REINFORCEMENT OF BASE SLAB SHALL BE WELDED OR CONTINUOUS WITH WALL REINFORCEMENT, WALL WIDTH: 8" FOR WET WELL.
- 38. THREE COATS OF COAL TAR EPOXY - BITUMASTIC NO 300M  
\* TO BE SIZED BY ENGINEER / LIFT STATION SUPPLIER (4" MIN)
- 39. EPOXY COATED AMERICAN FLOW CONTROL GATE VALVE SIZED PER PLANS. ADJUSTABLE VALVE BOX WITH 2' x 2' x 4" CONCRETE PAD.

**GENERAL NOTES**

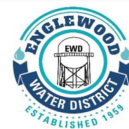
- 1. POSITION OF CONTROL PANEL SHALL BE DETERMINED BY E.W.D.
- 2. WATER SHALL BE MADE AVAILABLE NEAR PUMP STATION SITE - A METER AND RP BACKFLOW DEVICE SHALL BE INSTALLED.
- 3. WET WELL SHALL BE INSPECTED PRIOR TO COMMISSIONING.
- 4. VALVE VAULT SHALL BE INSPECTED PRIOR TO BACK FILLING AND INTERIOR COATING.
- 5. POWER SHALL BE 3 PHASE 100 AMP MINIMUM.
- 6. BREAKERS TO BE SqD FAL.
- 7. STARTER TO BE SqD CLASS 8536 NEMA RATE WITH THERMAL OVERLOAD RELAYS.
- 8. SELECTOT SWITCHES TO BE SqD CLASS 9001 SKS43B WITH KA CONTACT BLOCK.
- 9. PILOT LIGHTS TO BE SqD CLASS 9001,  
RED - SKP1R31, GREEN - SKP1G31, AMBER - SKP1A31.
- 10. PUSH BUTTON TO BE SqD 9001, ASB - SKRIU WITH KA CONTACT BLOCKS.
- 11. LIFT STATION SHALL BE ENCLOSED BY 6' HIGH SOLID PVC FENCE SYSTEM.

**EWD RADIO TELEMETRY SYSTEM**

- 1. DATA FLOW SYSTEMS, INC.  
TCU TAC PACK RTU. INCLUDES FIBERGLASS ENCLOSURE, RF PIGTAIL, RTU SURGE PROTECTION KIT, 3-PHASE SURGE PROTECTOR, POLYPHASE COAXIAL SURGE PROTECTOR, POLYPHASE COAXIAL SURGE PROTECTOR, BACKUP BATTERY.  
  
COMPLETE ANTENNA SUBSYSTEM, ROHN TOWER ASSEMBLY AND MAST, LAA200 ANTENNA AND COAXIAL CABLE ASSEMBLY, BLUEBIRD SUBMERSIBLE PRESSURE TRANSDUCER, CONTROL PANEL ENCLOSURE, 4 FUNCTION - MODULE RTU 204.

LAST REVISION	JUNE 2022
CHECKED	MM
APPROVED	KRL

**NOTES**



**ENGLEWOOD WATER DISTRICT**  
201 SELMA AVENUE  
ENGLEWOOD, FLORIDA 34223